



INSTALLATION INSTRUCTIONS

Heavy Duty Starter Drive for 1965-1988 Big Twins

READ THESE INSTRUCTIONS COMPLETELY BEFORE BEGINNING INSTALLATION!

NOTE: Refer to the Factory Shop Manual electrical section for safety instructions prior to performing any repairs or installations of electrical components.

CAUTION! ALWAYS DISCONNECT THE BATTERY CABLES BEFORE PERFORMING ANY ELECTRICAL SYSTEM REPAIRS OR MODIFICATIONS. THIS WILL PREVENT DAMAGE TO THE ELECTRICAL SYSTEM OR ACCIDENTAL STARTING OF THE MOTORCYCLE IN CASE OF AN ELECTRICAL ARC CAUSED BY SHORTING THE BATTERY POWER TO GROUND.

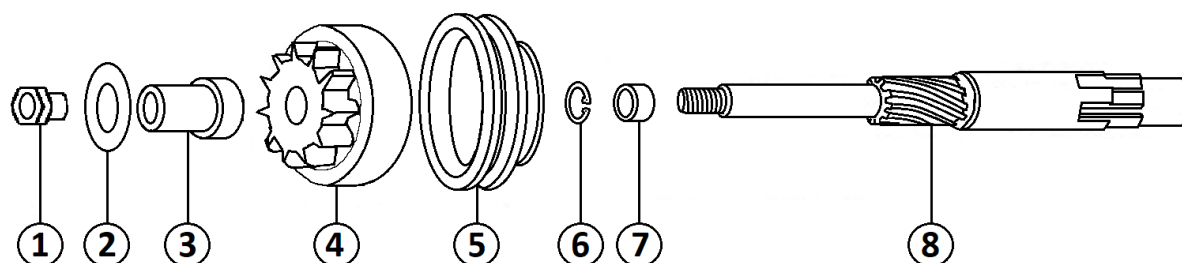
WARNING! SEVERE DAMAGE TO THE ELECTRICAL SYSTEM OR PERSONAL INJURY MAY OCCUR BY NOT FOLLOWING THE ABOVE SAFETY INSTRUCTIONS.

Step #1 DRIVE ASSEMBLY REMOVAL:

1. Disconnect the cables at the battery. Remove the ground (-) cable first and then the positive (+) cable.
2. Drain the oil in the outer primary case and remove the outer primary cover following instructions in the Factory Shop Manual.
3. Remove pinion shaft nut (1) (left hand thread). Remove retaining ring (6), remove thrust washer (2), remove pinion shaft collar (3), and remove old pinion gear (4).

Step #2 DRIVE ASSEMBLY INSTALLATION:

4. Install new Spyke Pinion Gear and secure it with the retaining ring (6).
5. Re-install pinion shaft collar (3), thrust washer (2), and pinion shaft nut (1). Tighten nut according to factory service manual.
6. Re-install battery cables in reverse order of Step 1.



**1. Pinion Shaft Nut
(Left Hand Thread)**
2. Thrust Washer
3. Pinion Shaft Collar

4. Pinion Gear
5. Shifter Collar
6. Retaining Ring

7. Spacer
8. Pinion Shaft

LIMITED WARRANTY

PerTronix, LLC. Warrants to the original Purchaser of its solid-state ignition system (product) that the module, trigger rotor and wiring (components) shall be free from defects in material and workmanship for a period of (12) months from the date of purchase.

If within the period of the foregoing warranty PerTronix finds, after inspection, that the product or any component thereof is defective, PerTronix will, at its option, repair such products or component or replace them with identical or similar parts PROVIDED that within such period Purchaser Promptly Notifies PerTronix, in writing, of such defects.